

Medley aus zwei Popsongs

4-stimmiger Kanon

www.elsbeth-music.ch

Maroon 5, Imagine Dragons

Arr.: Elsbeth Thürig

♩ = 124

1. C G

Dam da - ga - da - ga da - de - du, dam da - ga - da - ga da - de - du,

3 Am F

dam da - ga - da - ga da - de - du, dam. When the days__

5 2. C G Am F

__ are cold and the cards__ all fold and the saints__ we see are all made__ of gold.

9 3. C G

This is my king - dom__ come,__ this is my king - dom__ come,

11 Am F

__ this is my king - dom__ come,__ this is my king - dom__

13 4. C G Am F

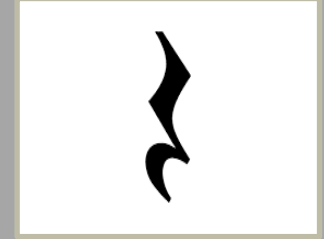
Yeah, yeah_yeah,yeah! Yeah, yeah,yeah. I need a girl like you.

Brp Brp Pt Pt Klatsch Brp Brp Pt Pt Pt Pt Klatsch
 re re li li re re li li
 Bein Bein Bein Bein Bein Bein Bein Bein



Bein-
patsch

Klatsch



Girls Like You/Demons - Begleitung

Die Lernenden spielen 4 Schläge pro Kasten.

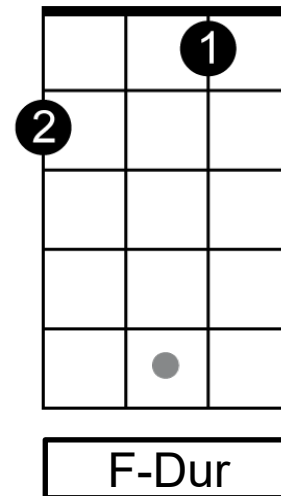
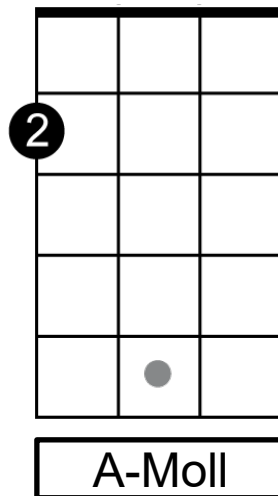
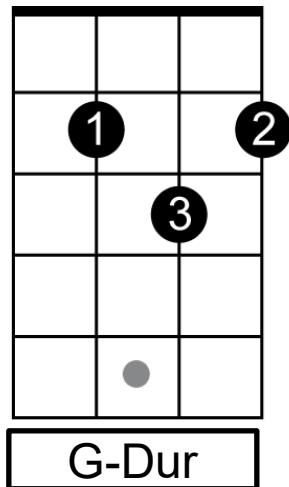
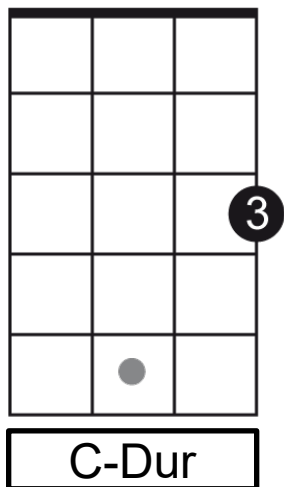
Die Farben entsprechen den Boomwhackers.

C	G7	Am	F
C	B	C	C
G	G	A	A
E	F	E	F
C	D	C	C

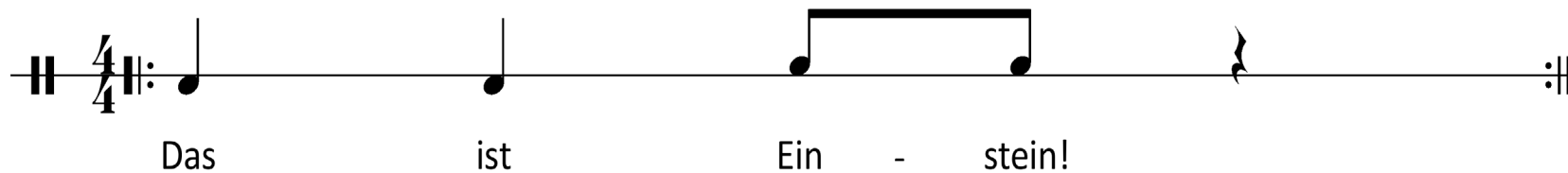
Mögliche Variation:



Ukulele Griffe



Cajon-Groove



♩ = 124

1. **C** **G**
 Dam da - ga - da - ga da - de - du, dam da - ga - da - ga da - de - du,

3 **Am** **F**
 dam da - ga - da - ga da - de - du, dam. When the days

5 2. **C** **G** **Am** **F**
 days are cold and the cards all fold and the saints we see are all made of gold.

9 3. **C** **G**
 This is my king - dom come, this is my king - dom come,

11 **Am** **F**
 this is my king - dom come, this is my king - dom.

13 4. **C** **G** **Am** **F**
 Yeah, yeah_yeah,yeah! Yeah, yeah,yeah. I need a girl like you.

C	G7	Am	F
C	B	C	C
G	G	A	A
E	F	E	F
C	D	C	C



4/4

Das ist Ein - stein!